



LC-Tech Solutions for your PFAS Sample Preparation



EluCLEAN® PFAS for all types of PFAS analytes



- Universal columns for various matrices such as food/feed, aqueous and solid environmental samples as well as drinking water samples
- Outstanding recovery rates of longer-chain PFAS and neutral sulfonamide PFAS
- HP version available for highly pigmented matrices (e.g. spinach)
- Very low standard deviations
- Excellent reproducibility

D-EVA: The brilliant solution for sample concentration



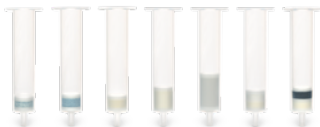
- Parallel evaporation of up to 23 samples (à 40 mL) or 53 samples (à 8 mL)
- Quantitative transfer into GC vial without rinsing
- Sensor-controlled concentration to individual final volume (e.g. 400 µL)
- Closed system during evaporation: prevents contamination from laboratory air
- Centrifugal force prevents aerosol formation: avoids cross-contamination
- High recovery rates even with neutral/low boiling PFAS (> 80 %)
- Use of PP tubes (e.g. Falcon format, 50 or 15 mL)
- Complete system consisting of centrifuge, chemical vacuum pump, cold trap, rotors, PFAS sensor
- Can also be operated outside a fume cupboard

The perfect combination for your PFAS analysis:



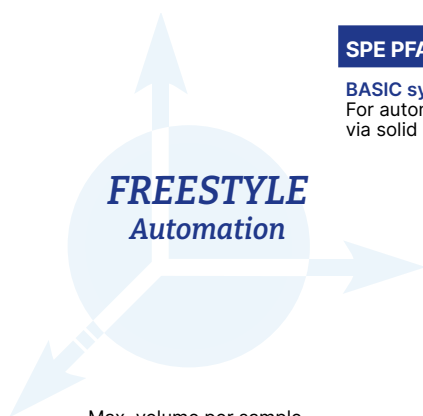
+








EluCLEAN® - SPE Columns Overview

	Column	Sorbent	Suitable for the following standards	P/N	Pcs/Pkg
Enrichment and clean-up of PFAS from <i>various matrices including food, feed, drinking water, aqueous and solid environmental samples</i>	EluCLEAN® PFAS Universal	Special Combination Phase		20841	30
				20842	100
				20843	500
Enrichment and clean-up of PFAS from <i>highly pigmented food and feed and highly coloured environmental samples</i>	EluCLEAN® PFAS Uni-versal HP	Special Combination Phase		20851	30
				20852	100
				20853	500
Enrichment of PFAS from <i>Drinking Water</i>	EluCLEAN® PFAS SDVB	Poly(Styrene-Co-Divinylbenzene) Polymer (SDVB) 500 mg / 6 mL	US EPA 537.1, ISO 25101	20801	30
				20802	100
				20803	500
	EluCLEAN® PFAS WAX	Weak Anion Exchanger, Mixed-Mode Polymeric Sorbent (WAX) 500 mg / 6 mL	US EPA 533, prEN-17892-2022, DIN 38407-42, ISO 21675:2019, ISO 25101	20811	30
				20812	100
				20813	500
EluCLEAN® PFAS WAX	Weak Anion Exchanger, Mixed-Mode Polymeric Sorbent (WAX) 200 mg / 6 mL	US EPA 533, prEN-17892-2022, DIN 38407-42, ISO 21675:2019, ISO 25101	20871	30	
			20872	100	
			20873	500	
Enrichment and clean-up of PFAS from <i>aqueous and solid environmental samples</i>	EluCLEAN® PFAS WAX/ GCB	Sorbent 1: Weak Anion Exchanger, Mixed-Mode Polymeric Sorbent (WAX) Sorbent 2: Graphitized Carbon Black (GCB) 150 mg / 10 mg / 6 mL	US EPA 1633 (3rd draft), DIN 38414-14, DIN 38407-42, ISO 21675:2019	20821	30
				20822	100
				20823	500
	EluCLEAN® PFAS WAX/ GCB	Sorbent 1: Weak Anion Exchanger, Mixed-Mode Polymeric Sorbent (WAX) Sorbent 2: Graphitized Carbon Black (GCB) 200 mg / 50 mg / 6 mL	DoD und DoE, SM 5.1/5.3, US EPA 1633, (3rd draft), DIN 38414-14, DIN 38407-42, ISO 21675:2019	20831	30
			20832	100	
			20833	500	



	SPE PFAS (e.g. Dual SPE)	XANA PFAS	XANA PFAS TableTop
	BASIC system with SPE-PFAS module For automated clean-up of PFAS samples via solid phase extraction	FREESTYLE BASIC system with SPE-PFAS module and XANA-PFAS module For automated clean-up of PFAS in 0.1 – 10 L water samples	Dedicated PFAS Unit The downscale of the FREESTYLE XANA
			
Max. volume per sample	100 mL	4 L	250 mL
Samples per sequence	27	24	30
Duration per SPE sequence	r.a. 13 h (Dual-SPE for food matrices)	r.a. 6.5 h (for US EPA 537.1)	r.a. 9 h (for US EPA 537.1)
Samples at the same time	1	up to 6	up to 6
Location	on lab bench	incl. table	on lab bench
PFAS compatibility	PE-tubings, PTFE-free syringe, PTFE-free valves		
Solvent compatibility	All solvents required acc. regulations are compatible		

Feel free to ask for more details about LCTech's PFAS solutions



LCTech GmbH
Daimlerstr. 4

84419 Obertaufkirchen, Germany
Tel. +49 8082 2717-0

info@LCTech.de
www.LCTech.de